

Contact Information

Indus Motor Company Limited
Plot No. N.W.Z./1/P-1, Port Qasim Authority, Karachi, Pakistan.
Phone: +92-21-34721100 UAN: +92-21-111-86-96-82 (+92-21-111-TOYOTA)

Customer Assistance Centre
Toll Free: 0800-11123
Email: customer.relations@toyota-indus.com

ToyotaPakistanOfficial

@ToyotaPak

ToyotaPakistan

www.toyota-indus.com

HIACE

Make Your Way



Move your world

DELIVERING
Efficiency





Intelligent Design for Easy Driving

Intelligent design assures improved control and driving ease at all times. Essentials, indicators and switches are positioned for maximum visibility and intuitive operation and the panel-mounted shift lever allows pass-through access from either side of the cabin. Ergonomic seat design contributes to a fatigue-free driving experience on long trips and in stop-and-go city traffic, keeping you refreshed, alert and focused on the road ahead.



LOADED WITH FEATURES TO MAKE *Work-life Easier*



Crystal
headlamps



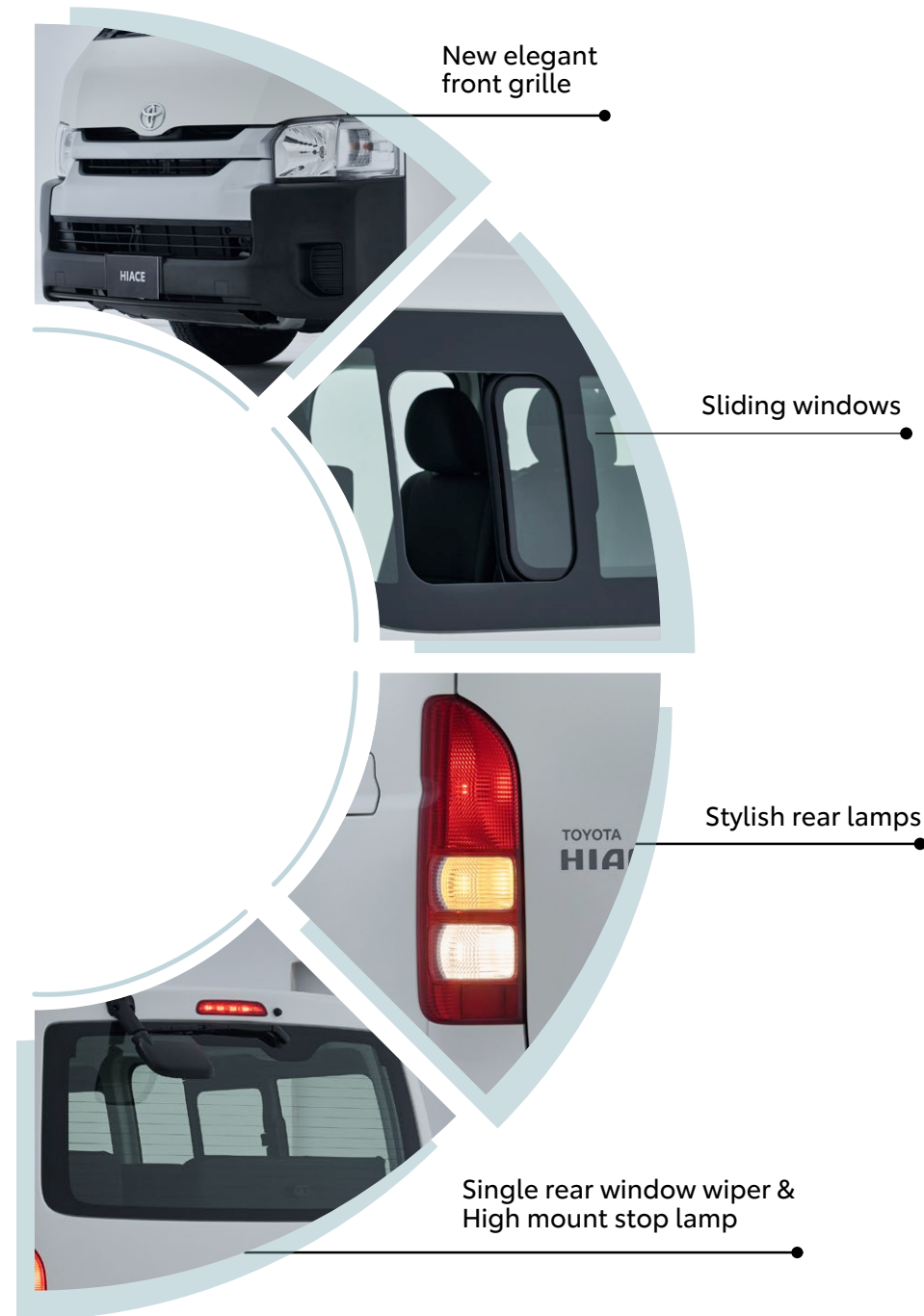
4-spoke urethane
steering wheel with
manual tilt



Dial controls with
center buttons



Audio includes radio
and CD player





Standard Roof & Mid Roof seating style

Passenger Space & Comfort

HIACE is a relaxing and a comfortable vehicle for passengers, for long rides with the advantage of headrests and safety belts, with which passengers can enjoy their pleasant journey safe and sound. HIACE's seat fabrics have been strengthened to withstand long-term wear and tear, giving you added confidence in its all-round durability. HIACE has been developed with functionality in mind, to be great to use and easy to live with. Whichever body design you pick, every HIACE delivers a hard-working combination of functionality, flexibility and comfort.



Rear reclining seats with headrests (only available in High Roof)



Spacious entry/exit



Dual A/C with separate air vents

Class-Leading Capacity and Versatility



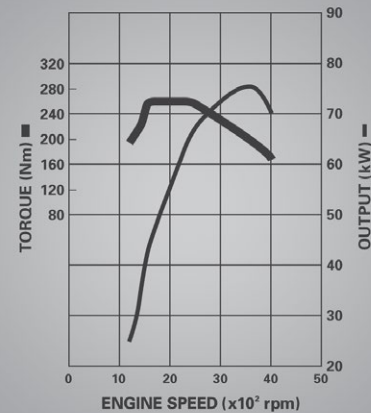
Luggage space

A Powerful and Fuel Efficient Engine Line-up

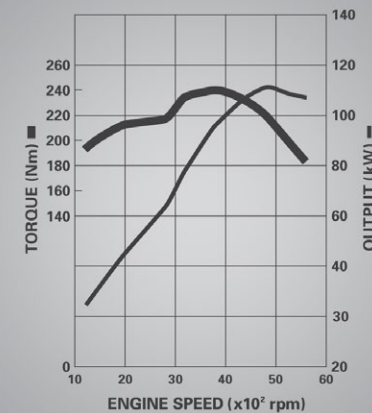
Choose from the powerful acceleration of a 2TR-FE, 2.7L Petrol engine, 2694cc, 16 Valve DOHC with VVT-i, or a 2KD-FTV, Diesel engine, 2494cc, 16 Valve DOHC.

Tough for Heavy Duty Load

Whatever the load, on whatever the road, HIACE performance will see you through. A choice of two different engines is available and both offer the outstanding power and reliability, for which we're famous, but the HIACE isn't just powerful, it's also surprisingly nimble with a small turning radius that makes it easy to manoeuvre.



Diesel Engine (2KD-FTV)



Petrol Engine (2TR-FE)



5.3m
High Roof

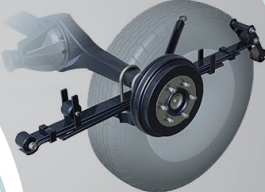
5.0m
Standard Roof

Embedded Safety Features for the Ultimate Driving Pleasure

Driver and Front passenger seats' SRS (Supplemental Restraint System) airbags



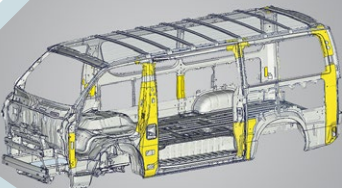
Rear suspension - Rigid leaf



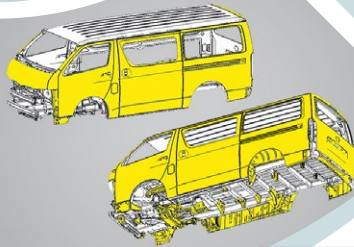
Front suspension - Double wishbone



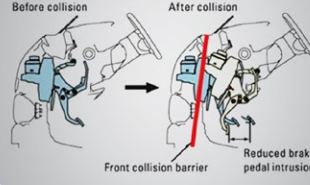
High rigidity body for excellent stability and durability



Corrosion resistant



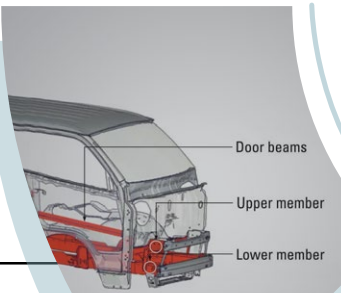
Brake pedal and steering shaft intrusion-reduction system



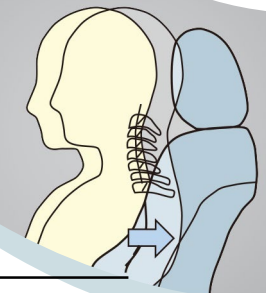
Seat belts



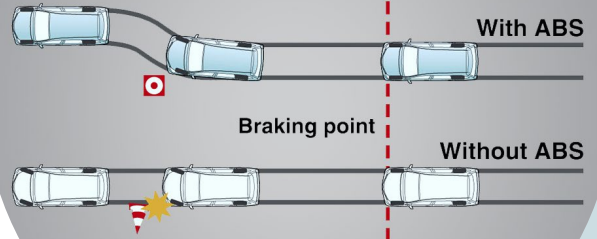
New upper and lower front frame members



WIL (Whiplash Injury Lessening) concept seat design



ABS (Anti-lock Braking System)



Crumple zone protection



Excellent Resilience and Solidity

The HIACE has a proven track record of durability with numerous design features. It includes safety system and impressive handling with dynamic stability for the passengers' satisfaction. Contributing to long-term reliability, it helps protect your vehicle investment and ensures your passengers' safety.

A Choice of Body Styles

High Roof

Standard Roof



HIACE



ENGINE		PETROL MODELS		DIESEL MODELS	
BODY TYPE		HIGH ROOF	STD ROOF	STD ROOF	HIGH ROOF
Performance					
Brake Type	Front	Ventilated Disc Brakes	x	x	x
	Rear	Leading-Trailing Drum Brakes	x	x	x
Suspension Type	Front	Double Wishbone	x	x	x
	Rear	Leaf Spring Rigid Axle	x	x	x
Power Steering Type			o	o	x
Exterior					
Tyres & Disc Wheels		195/R15C	195R15C 8PR Tubeless	195R15C 8PR Tubeless	195R15C BFR TUBE LESS 15x6d
Rear Window Wiper		x	Intermittent	Intermittent	Intermittent
Outside Rear View Mirrors		Door	Door	Door	Door
Headlamps		Halogen	Haloge	Halogen	Halogen
Mud Guards		x	o	o	o
High Mount Stop Lamp		x	With LED	LED	LED
Wheel Caps		Full Cap	Full Cap	Full Cap	Full Cap
Spare Tyre		Ground Tyre	Ground Tyre	Ground Tire	Ground Tire
Dimension					
Overall	Length (mm)	5380	4695	4695	5380
	Width (mm)	1880	1695	1695	1880
	Height (mm)	2285	1980	1980	2285
Wheelbase	(mm)	3110	2570	2570	3110
Tread	Front (mm)	1655	1470	1470	1655
	Rear (mm)	1650	1465	1465	1650
Overhang	Front (mm)	1185	1050	1050	1190
	Rear (mm)	1085	1075	1075	1080
Min. Running Ground Clearance	(mm)	x	185	185	x
Fuel Tank Capacity	Ltr	x	70	70	x
Seating Capacity (persons)		0	15	15	14
Engine					
Engine Model Code		2TR-FE	x	2KD-FTV	x
No. of Cyls & Arrangement		4 Cylinders, In line	x	x	x
Displacement	(cm3)	2694	x	2494	x
Compression Ratio		9.6	x	18.5	x
Fuel System		EFI	x	Common Rail Type	x
Valve Mechanism		16 Valve DOHC with VVT-i	x	16 Valve DOHC	x
Intake System		Naturally Aspirated	x	Turbocharger	x
Max. Output	(kW/RPM)	111/4800	x	75/3600	x
Max. Torque	(Nm/RPM)	241/3800	x	260/1600-2400	x
Emission Certification		EURO III	EURO II	x	x

O = Available X = Not Available
Indus Motor Company reserves the right to alter any details of specifications and equipment without notice. Vehicles shown and specifications mentioned herein may vary from models and equipment available.

HIACE



BODY TYPE		PETROL MODELS		DIESEL MODELS	
ENGINE		HIGH ROOF	STD ROOF	STD ROOF	HIGH ROOF
Interior					
Steering Wheel		4-SPOKE URETHANE, A/B,	4-Spoke Urethane	4-Spoke Urethane	4-Spoke Urethane
Inside Rear View Mirror		Day & Night	Day & Night	Day and Night	Day and Night
Rear Window Defogger		x	With Timer	With Time	With Timer
Audio		x	AM/FM, USB, 2SP	AM/FM, USB, 2SP	AM/FM, USB, 2SP
Console Box		Center Seat Back with 2 Cup Holders	Center Seat Back with 2 Cup Holders	Center Seat Back with 2 Cup	x
Room Lamps		Front (1), Rear (1) w/Switches	Front (1), Rear (2) w/Switches	Front (1), Rear (1) w/Switches	Front (1), Rear (1) w/Switches
Seat Material		Fabric	Vinyl Leather	Vinyl Leather	Fabric
Dual Air Conditioner		x	o	o	o
Heater	Front	x	o	o	o
	Rear	x	x	o	o
Rear Head Rests		x	x	x	12 (Fixed)
Steering Column		Manual Tilt	Manual Tilt	Manual Tilt	Manual Tilt
Power Steering		o	o	o	o
Cup Holders		o	x	o	x
Ash Tray		F:1 without illuminator	F:1 without illuminator	F:1 without illuminator	F:1 without illuminator
Glove Box		Lower:1	Upper:1 Lower:2	Lower: 1	Lower: 1
Front Head Rests		2 (Head Rests)	2 (Head Rests)	2 (Head Rests)	3 (Head Rests)
Front Seat Reclining		D+P Reclining	D+P Reclining	D+P Reclining	D+P Reclining
Rear Seat Adjuster		x	x	DC12V	x
Clock		Built-In-Meter	Built-In-Meter	Built in Meter	Built in Meter
Accessory Connector		DC12V	DC12V	DC12V	DC12V
Assist Grip		FR:3 Slide Door:1	FR:3 Slide Door:2	FR: 3	FR:3 Slide Door:1
Seat Assist Grip		x	RR1: 1, RR2:2, RR3:2	RR1: 1, RR2:2, RR3:3	RR1: 1, RR2:2, RR3:4
Step Lamp		o	x	x	x
Sun Visors		Slide door 1	x	D+P (Fabric)	D+P (Fabric)
ABS		o	x	o	o
Airbag System		D + P	x	D+P	D+P
Seat Belts	Front	3B ELRX2 (D+P:PRETENSIONER), 2P NRX	3P ELRx2 2P NRx1	3P ELRX2(D+B:PRETENSIONER)	3P ELRX2(D+B:PRETENSIONER)
	Rear	x	2P NRX11	2P NRX1 - 2P NRX11	3P RLRX12
Light Reminder Warning		With Buzzer	With Buzzer	With Buzzer	With Buzzer
Key Reminder Warning		With Buzzer	With Buzzer	With Buzzer	With Buzzer

O = Available X = Not Available
Indus Motor Company reserves the right to alter any details of specifications and equipment without notice. Vehicles shown and specifications mentioned herein may vary from models and equipment available.